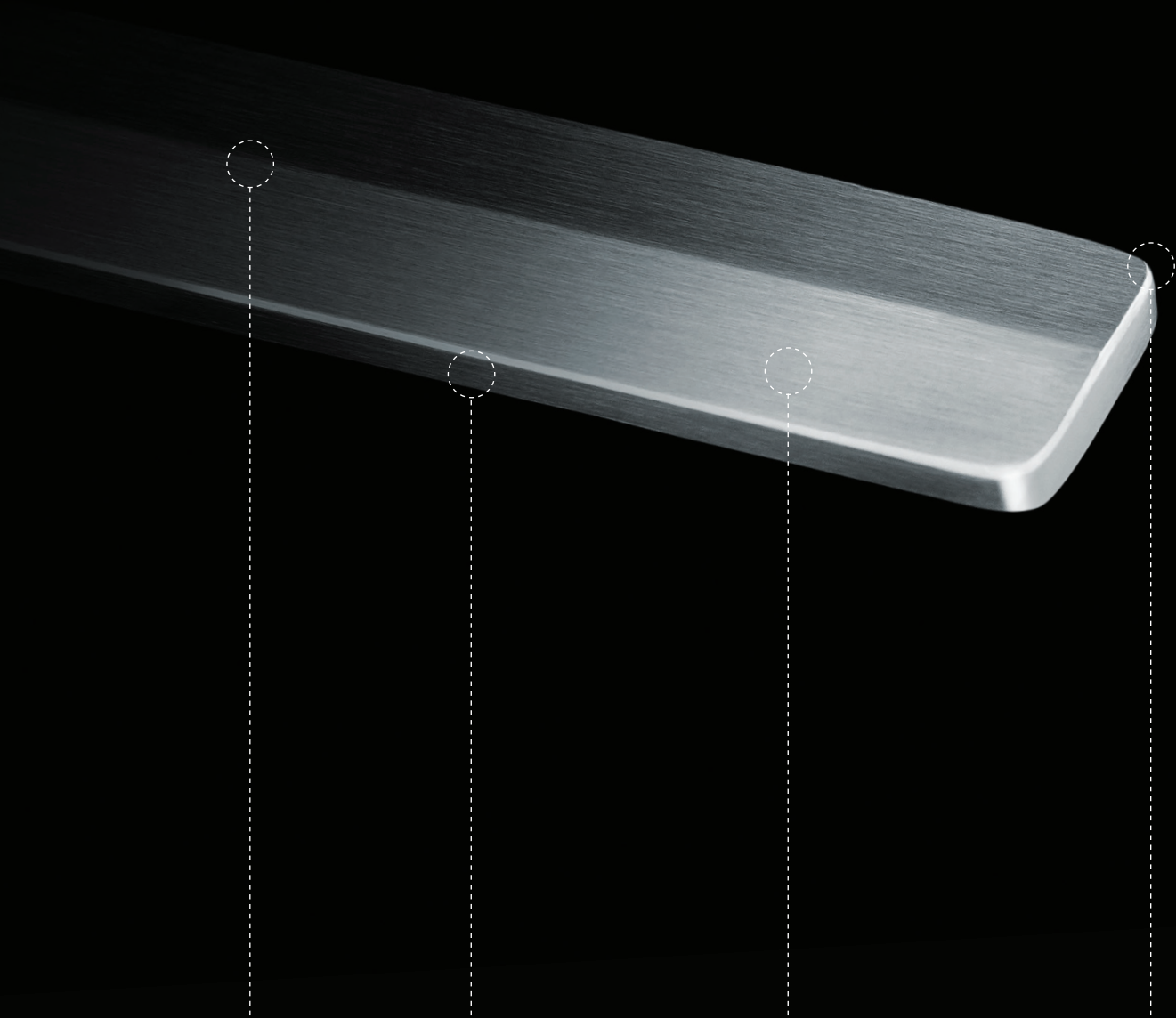




Austral Lock
BY GAINSBOROUGH

VERTA™ SERIES





LINEAL

Subtle, architectural lines create planes to reflect light in every direction

TACTILE SURFACE

Straight edges transition to gently rounded backs, curving into your hand and creating a soft touching point

STAINLESS STEEL

Constructed from marine-grade stainless steel gives Verta strength, presence and lasting beauty

RADIUS CORNERS

Hard, straight lines soften into a radius corner, creating a juxtaposition between straight and curved

Verta [värd]

1. From Swedish (“worth, worthy”)

2. (archaic) match (equal or superior in comparison)

ALL THE ELEMENTS

Verta's range of sliding and hinged door furniture gives you the freedom to create spaces you love.

Beautifully designed products need attention to detail from creation to completion. Every element of Verta has been sourced, crafted and finished by experts.

Each piece of Verta is constructed from stainless steel. We start with one of the highest grades of stainless steel available - 316 marine-grade.

After construction, Verta is tested. And tested. And tested again. To endurance standards of 200,000 cycles.

Verta's precision engineering, uncompromised design and superior construction is the perfect balance between functionality and beautiful design.



Entrance

GRAND ENTRANCES

Create a grand entrance to your home with Verta's Entrance Pull Handle. Make a bold statement with your front door and showcase stylish accents throughout your home.

Enchant your visitors with classic lines and modern design; delight senses with tactile surfaces, hard steel and soft edges. Enjoy a grand entrance each time you enter your home.

Close one door, open another. Match the back door to the front. Inside or out, Verta's designer accents reflect and enhance your individual style.

Long Plate Lever

214mm length



SSS13005



MB13005

Euro Cylinder Escutcheon

92mm length



SSS15004A



MB15004A

Entrance Pull Handle

800mm length

SSS16000

MB16000

7 year tarnish / 10 year mechanical warranty.

Constructed from 316 marine-grade stainless steel.

Suitable for internal and external use.

Available in satin stainless steel and PVD matte black finishes.

**“Fashion is architecture:
It is a matter of proportions.”**

Coco Chanel

**“Beauty awakens
the soul to act.”**

Dante Alighieri



Sliding

VISTAS

Bring the outside in. Create open spaces or snug hideaways. Transform a room, change spaces and enhance beautiful vistas.

Verta's range of sliding door furniture gives you the freedom to create spaces you love.

Whether your design calls for matching back to back hardware on the interior and exterior or just a single side fix on the interior, the Verta range offers a variety of kits to match your needs.

Flush Pull

250mm length



SSS15002

MB15002

Sliding Door Pull Handle

300mm length



SSS15000

MB15000

Euro Cylinder Escutcheon

92mm length



SSS15004A

MB15004A

7 year tarnish / 10 year mechanical warranty.
Constructed from 316 marine-grade stainless steel.
Suitable for internal and external use.
Available in satin stainless steel and PVD matte black finishes.

Hinged Locking

VIRTUS



2 Point Hinged Mortice Lock
2PT-30A (30mm back set)
2PT-40A (40mm back set)
2PT-60A (60mm back set)

4 Point Hinged Mortice Lock
4PT-30A (30mm back set)
4PT-40A (40mm back set)
4PT-60A (60mm back set)

PEACE OF MIND

Sleep soundly knowing you are protecting those that are important. Locally engineered and made to meet local conditions, ensures it works first time, every time.

MORTICE BACKSET	2 point 30mm, 40mm or 60mm 4 point 30mm, 40mm or 60mm
DOOR THICKNESS	32-60mm
CONSTRUCTION	SS face plate and high strength SS load bearing internal components
DURABILITY*	D ₈
STRENGTH RATING*	SL ₈
WARRANTY	10 years
ADDITIONAL FEATURES	Double throw of deadbolt: 13mm and 22mm Latch retraction with key on 2 point backset for easy access Magnetic multipoint rod kits with 4 point backsets for easy installation Adjustable, curved latch for varying door gaps and quieter closing

*Tested to these ratings as per AS4145.2:2008

SORRENTO



Hinged Door Mortice Lock
SR2LAS (Face mount)
SR2LAF (Flush mount)
ACCVERTA (fitting kit for sorrento mortice lock)

MORTICE BACKSET	33mm
DOOR THICKNESS	19-45mm
CONSTRUCTION	SS face plate, steel cased body and zinc die cast components
WARRANTY	10 years
ADDITIONAL FEATURES	Two stage bolt 9.8mm and 16mm Multipoint rod kits available Interior snib lever for quick and convenient locking without a key Interchangeable lock bolt to suit inward and outward opening doors

Sliding Locking

SCHLAGE



MORTICE BACKSET	28.5mm or 40mm
DOOR THICKNESS	32-45mm
CONSTRUCTION	SS face plate, strikes, beak and catch
DURABILITY*	D ₈
STRENGTH RATING*	SL ₇
WARRANTY	10 years
ADDITIONAL FEATURES	Secure double-hook bolts with anti-lift design Anti-slam feature prevents bolts being thrown unless door is closed Adjustable strike supplied as standard with other variations available

*Tested to these ratings as per AS4145.2:2008

Sliding Door Mortice Lock
SSH15100 (28.5mm backset) standard strike
SSH15100S (28.5mm backset) low profile strike
SSH16100 (40mm backset) low profile strike

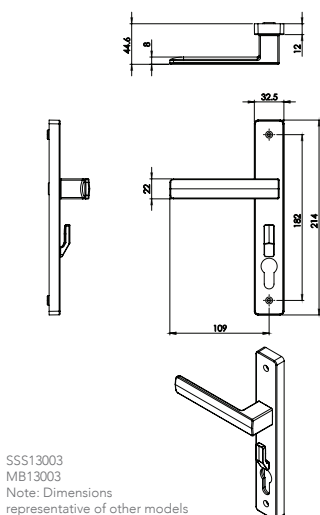
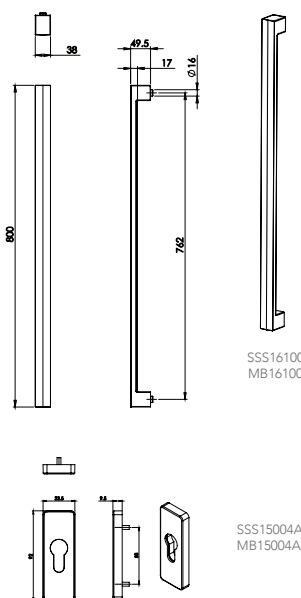
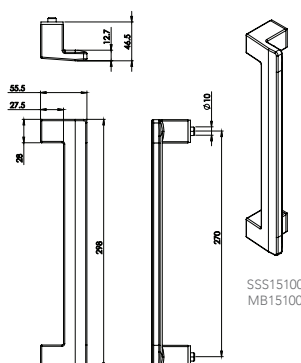
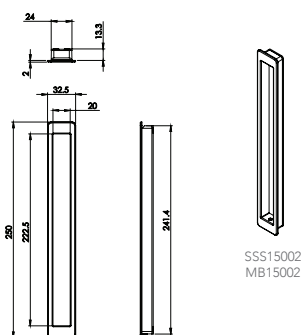
EURO PROFILE CYLINDERS



Cylinders
See pg. 10 for full list of product codes

APPLICATION	Sliding and Hinged doors
DESCRIPTION	Euro profile fix cam 5 pin cylinders
MORTICE BACKSET	Compatible with all industry standard Euro profile mortice backsets
DOOR THICKNESS	Depends upon the furniture used
CONSTRUCTION	Solid brass core
DURABILITY*	D ₈
WARRANTY	10 years
ADDITIONAL FEATURES	35mm offset from the center on each side for double cylinders Clutch mechanism allows the user to operate with a key when another key is inside cylinder on other side Available with single cylinder, double cylinder or thumbturn Grub screws hold the pins for easy repinning using Allen key

*Tested to these ratings as per AS4145.2:2008



SLIDING DOOR FURNITURE

DESCRIPTION	CODE
Verta flush pull stainless steel	SSS15002
Verta flush pull matte black	MB15002
Verta offset pull handle back to back stainless steel	SSS15000
Verta offset pull handle back to back matte black	MB15000
Verta offset pull handle single side fix stainless steel	SSS15100
Verta offset pull handle single side fix matte black	MB15100
Verta 800mm pull handle back to back stainless steel	SSS16000
Verta 800mm pull handle back to back matte black	MB16000
Verta 800mm pull handle single side fix stainless steel	SSS16100
Verta 800mm pull handle single side fix matte black	MB16100
Verta Euro escutcheon stainless steel	SSS15004A
Verta Euro escutcheon matte black	MB15004A
Verta single pull handle fixing kit	SSHPHFKIT
Verta 3mm single offset pull handle packer	VE8B

HINGE DOOR FURNITURE

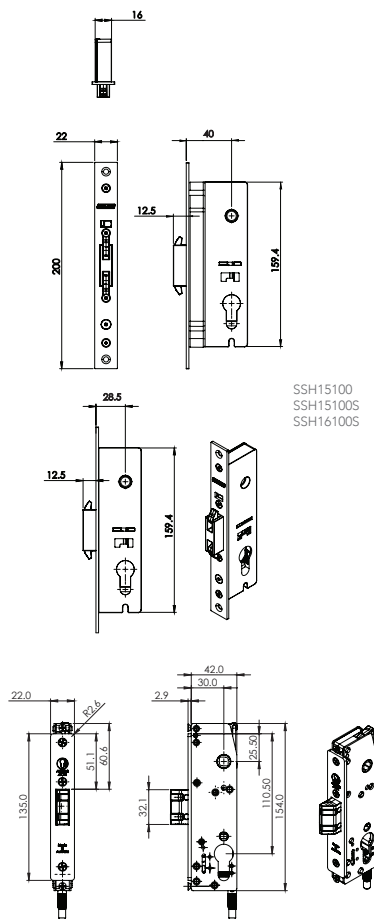
DESCRIPTION	CODE
Verta lever furniture external stainless steel	SSS13005
Verta lever furniture external matte black	MB13005
Verta lever furniture internal stainless steel turnsnib	SSS13003
Verta lever furniture internal matte black turnsnib	MB13003
Verta lever furniture internal stainless steel	SSS13002
Verta lever furniture internal matte black	MB13002

MORTICE LOCKS AND ACCESSORIES

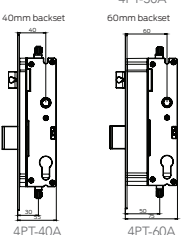
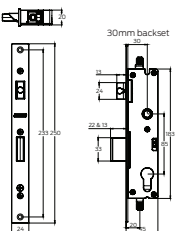
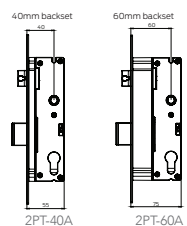
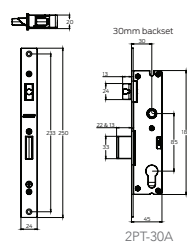
DESCRIPTION	CODE
FOR SLIDING DOORS	
Sliding mortice lock, 28.5mm back set, less cylinder with standard strike	SSH15100
Sliding mortice lock, 28.5mm back set, less cylinder with low profile strike	SSH15100S
Sliding mortice lock, 40mm back set, less cylinder with low profile strike	SSH16100S
Verta sliding flat strike kit	SSH17400
Mortice sliding door lock, standard strike kit	SSH17100
FOR HINGED DOOR WITH SNIB	
Sorrento hinged mortice lock flush mount	SR2LAF
Sorrento hinged mortice lock face mount	SR2LAS
Accessory kit Verta for Sorrento mortice lock	ACCVERTA
FOR HINGED DOOR WITHOUT SNIB	
Virtus hinged 2 point mortice lock, 30mm back set, less cylinder with standard strike	2PT-30A
Virtus hinged 2 point mortice lock, 40mm back set, less cylinder with standard strike	2PT-40A
Virtus hinged 2 point mortice lock, 60mm back set, less cylinder with standard strike	2PT-60A
Virtus hinged 4 point mortice lock, 30mm back set, less cylinder with standard strike	4PT-30A
Virtus hinged 4 point mortice lock, 40mm back set, less cylinder with standard strike	4PT-40A
Virtus hinged 4 point mortice lock, 60mm back set, less cylinder with standard strike	4PT-60A
Virtus strike plate 12mm for left and right with stainless steel screws	2PT-12ASK
Virtus strike plate 60mm, non-handed	2PT-60ASK
Virtus rod pack for 2.36m panel height and multipoint locks	4PT-RK
Virtus extension rod pack for 3.36m panel height and multipoint locks	4PT-RKEX

CYLINDERS

DESCRIPTION	CODE
AA 45mm PVD black 5 pin C4 repinnable fix cam, Euro single cylinder KA	AAF455C4MB/KA
AA 45mm PVD black 5 pin GR9 repinnable fix cam, Euro single cylinder KA	AAF455GMB/KA
AA 45mm SC 5 pin C4 repinnable fix cam, Euro single cylinder KA	AAF455C4SC/KA
AA 45mm SC 5 pin GR9 repinnable fix cam, Euro single cylinder KA	AAF455GSC/KA
AA 45mm PVD black fix cam, Euro cylinder, thumbturn	AAF45TTMB
AA 45mm SC fix cam, Euro cylinder, thumbturn	AAF45TTSC
AA 70mm PVD black 5 pin C4 repinnable fix cam, Euro double cylinder KA	AAF705C4MB/KA
AA 70mm PVD black 5 pin GR9 repinnable fix cam, Euro double cylinder KA	AAF705GMB/KA
AA 70mm SC 5 pin C4 repinnable fix cam, Euro double cylinder KA	AAF705C4SC/KA
AA 70mm SC 5 pin GR9 repinnable fix cam, Euro double cylinder KA	AAF705GSC/KA
AA 70mm PVD black 5 pin C4 repinnable fix cam, Euro cylinder, interior thumbturn KA	AAF705C4TTMB/KA
AA 70mm PVD black 5 pin GR9 repinnable fix cam, Euro cylinder, interior thumbturn KA	AAF705GTTMB/KA
AA 70mm SC 5 pin C4 repinnable fix cam, Euro cylinder, interior thumbturn KA	AAF705C4TTSC/KA
AA 70mm SC 5 pin GR9 repinnable fix cam, Euro cylinder, interior thumbturn KA	AAF705GTTSC/KA
AA 70mm SC 6 pin C4 lazy cam cylinder KA (for hinged door locks with turn snib)	AA706C4SC/KA
AA 70mm SC 6 pin C4 lazy cam cylinder KD (for hinged door locks with turn snib)	AA706C4SC/KD



SR2LAF
Note: Dimensions representative of SR2LAS



SLIDING DOOR KITS FOR BACK TO BACK

DESCRIPTION	CODE
Sliding mortice lock, Verta flush pull set, stainless steel, less cylinder <i>Includes 2 flush pulls, 2 Euro escutcheons, 28.5mm back set lock</i>	SSSFPPAK
Sliding mortice lock, Verta flush pull set, matte black, less cylinder <i>Includes 2 flush pulls, 2 Euro escutcheons, 28.5mm back set lock</i>	MBSFBPAK
Sliding mortice lock, Verta flush pull set, stainless steel, less cylinder <i>Includes 2 flush pulls, 2 Euro escutcheons, 28.5mm back set lock, low profile strike</i>	SSSFPSPAK
Sliding mortice lock, Verta flush pull set, matte black, less cylinder <i>Includes 2 flush pulls, 2 Euro escutcheons, 28.5mm back set lock, low profile strike</i>	MBSFSPAK
Sliding mortice lock, Verta flush pull set, stainless steel, less cylinder <i>Includes 2 flush pulls, 2 Euro escutcheons, 40mm back set lock, low profile strike</i>	SSSFPS40PAK
Sliding mortice lock, Verta flush pull set, matte black, less cylinder <i>Includes 2 flush pulls, 2 Euro escutcheons, 40mm back set lock, low profile strike</i>	MBSFPS40PAK
Sliding mortice lock, Verta 800mm pull handle set, stainless steel, less cylinder <i>Includes 2 800mm pulls, 2 Euro escutcheons, 28.5mm back set lock</i>	SSS800PHPAKB2B
Sliding mortice lock, Verta 800mm pull handle set, matte black, less cylinder <i>Includes 2 800mm pulls, 2 Euro escutcheons, 28.5mm back set lock</i>	MBS800PHPAKB2B
Sliding mortice lock, Verta 800mm pull handle set, stainless steel, less cylinder <i>Includes 2 800mm pulls, 2 Euro escutcheons, 28.5mm back set lock, low profile strike</i>	SSS800PHSPAKB2B
Sliding mortice lock, Verta 800mm pull handle set, matte black, less cylinder <i>Includes 2 800mm pulls, 2 Euro escutcheons, 28.5mm back set lock, low profile strike</i>	MBS800PHSPAKB2B
Sliding mortice lock, Verta offset pull handle set, stainless steel, less cylinder <i>Includes 2 offset pulls, 2 Euro escutcheons, 28.5mm back set lock</i>	SSSOSHPAKB2B
Sliding mortice lock, Verta offset pull handle set, matte black, less cylinder <i>Includes 2 offset pulls, 2 Euro escutcheons, 28.5mm back set lock</i>	MBSOSHPAKB2B
Sliding mortice lock, Verta offset pull handle set, stainless steel, less cylinder <i>Includes 2 offset pulls, 2 Euro escutcheons, 28.5mm back set lock, low profile strike</i>	SSSOSPHSPAKB2B
Sliding mortice lock, Verta offset pull handle set, matte black, less cylinder <i>Includes 2 offset pulls, 2 Euro escutcheons, 28.5mm back set lock, low profile strike</i>	MBSOSPHSPAKB2B

SLIDING DOOR KITS FOR SINGLE SIDE FIX

DESCRIPTION	CODE
Sliding mortice lock, Verta flush pull set, stainless steel, single side fix, less cylinder <i>Includes 1 flush pull, 2 Euro escutcheons, 40mm back set lock, low profile strike</i>	SSSFPS40PAKSF
Sliding mortice lock, Verta flush pull set, matte black, single side fix, less cylinder <i>Includes 1 flush pull, 2 Euro escutcheons, 40mm back set lock, low profile strike</i>	MBSFPS40PAKSF
Sliding mortice lock, Verta 800mm pull handle set, stainless steel, single side fix, less cylinder <i>Includes 1 800mm pull, 2 Euro escutcheons, 28.5mm back set lock, low profile strike</i>	SSS800PHSPAJSF
Sliding mortice lock, Verta 800mm pull handle set, matte black, single side fix, less cylinder <i>Includes 1 800mm pull, 2 Euro escutcheons, 28.5mm back set lock, low profile strike</i>	MBS800PHSPAJSF
Sliding mortice lock, Verta offset pull handle set, stainless steel, single side fix, less cylinder <i>Includes 1 offset pull, 2 Euro escutcheons, 28.5mm back set lock, low profile strike</i>	SSSOSPHSPAJSF
Sliding mortice lock, Verta offset pull handle set, matte black, single side fix, less cylinder <i>Includes 1 offset pull, 2 Euro escutcheons, 28.5mm back set lock, low profile strike</i>	MBSOSPHSPAJSF

HINGED DOOR KITS WITH SNIB FUNCTION

DESCRIPTION	CODE
Hinged mortice lock, multipoint, Verta handle set, stainless steel, less cylinder <i>Includes internal and external handle, Sorrento flush mount lock, ACCVERTA and multipoint kit</i>	SSHLPMPPAK
Hinged mortice lock, multipoint, Verta handle set, matte black, less cylinder <i>Includes internal and external handle, Sorrento flush mount lock, ACCVERTA and multipoint kit</i>	MBHLPMPPAK
Hinged mortice lock, Verta handle set, stainless steel, less cylinder <i>Includes internal and external lever, Sorrento flush mount lock and ACCVERTA accessory kit</i>	SSHLPAPK
Hinged mortice lock, Verta handle set, matte black, less cylinder <i>Includes internal and external lever, Sorrento flush mount lock and ACCVERTA accessory kit</i>	MBHLPAPK

HINGED DOOR KITS WITHOUT SNIB FUNCTION

DESCRIPTION	CODE
Hinged mortice lock, multipoint, Verta handle set, stainless steel, less cylinder <i>Includes internal and external handle, Virtus 4pt lock 30mm back set, rod pack 2.3m, 12mm R and L strike</i>	SSHLPSPPAK
Hinged mortice lock, multipoint, Verta handle set, matte black, less cylinder <i>Includes internal and external handle, Virtus 4pt lock 30mm back set, rod pack 2.3m, 12mm R and L strike</i>	MBHLPSPPAK
Hinged mortice lock, Verta handle set, stainless steel, less cylinder <i>Includes internal and external handle, Virtus 2pt lock 30mm back set, 12mm R and L strike</i>	SSHLPSPAK
Hinged mortice lock, Verta handle set, matte black, less cylinder <i>Includes internal and external handle, Virtus 2pt lock 30mm back set, 12mm R and L strike</i>	MBHLPSPAK

About Allegion™

Allegion (NYSE: ALLE) is a global pioneer in seamless access, with leading brands like CISA®, Interflex®, LCN®, Schlage®, SimonsVoss® and Von Duprin®. Focusing on security around the door and adjacent areas, Allegion secures people and assets with a range of solutions for homes, businesses, schools and institutions.

For more, visit www.allegion.com.au or www.allegion.co.nz

Brio ■ <FSH> ■ Gainsborough ■ LEGGE ■ SCHLAGE

Due to continuous product development, some products may vary from that shown. The Allegion guarantee, shown on the pages within applied only when properly installed and subjected to no more than fair wear and tear. This guarantee does not extend to labour costs, personal loss, death or injury or economic, consequential or property damage of any kind whatsoever. Due to the nature of the printing process, colours may vary from those shown in this brochure.

Allegion (Australia) Pty Ltd

Freephone 1800 098 094

Freefax 1800 098 095

Email info.au@allegion.com

www.allegion.com.au

999AUB_VERTA
©2023 ALLEGION

