

Verta Euro Profile Cylinders



Features

Verta euro profile cylinders are suitable to use for a wide range of applications. They are made of solid brass and have been thoroughly tested to establish quality and durability

These incorporate a clutch mechanism to enable use of key to unlock from outside while key is still left in the keyway on the inside and vice versa.

They are designed and tested to Australian and New Zealand standards.

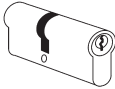
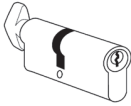
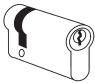
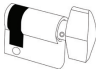
Available in multiple configurations - double cylinders, cylinder with thumb turn on one side, single cylinders and single cylinder with thumb turn. Available in C4 keyway as well as in Gainsborough GR9 keyway and in PVD Black and Satin Chrome finishes.

Can be keyed to other codes to be able to use as part of a One Key system

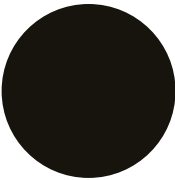
- PVD Black tested for 300 hours NSS
- Tested for 80,000 cycles
- Comes with construction ball hole
- Pin holes secured with grub screws for easy repinning
- Fixed cam with clutch mechanism
- PVD Black or Satin Chrome finishes
- Solid brass construction

Warranties	
Mechanical	10 years
Finish	7 years

Technical Specifications

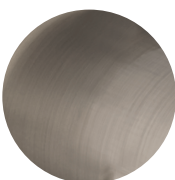
Description		Description	Finish	Length
	Item Code			
	AAF705C4MB/KA AAF705GMB/KA AAF705C4SC/KAC4 AAF705GSC/KA GR9	C4 Keyway Double Cylinder GR9 Keyway Double Cylinder Keyway Double Cylinder Keyway Double Cylinder	PVD Black Satin Chrome	70mm
	AAF705C4TTMB/KA AAF705GTTMB/KA AAF705C4TTSC/KA AAF705GTTSC/KA	C4 Keyway Cylinder with Interior Thumb Turn GR9 Keyway Cylinder with Interior Thumb Turn C4 Keyway Cylinder with Interior Thumb Turn GR9 Keyway Cylinder with Interior Thumb Turn	PVD Black Satin Chrome	87.5mm
	AAF455C4MB/KA AAF455GMB/KA AAF455C4SC/KA AAF455GSC/KA	C4 Keyway Single Cylinder GR9 Keyway Single Cylinder C4 Keyway Single Cylinder GR9 Keyway Single Cylinder	PVD Black Satin Chrome	45mm
	AAF45TTMB AAF45TTSC	Thumb Turn only Thumb Turn only	PVD Black Satin Chrome	62.5mm

Finishes



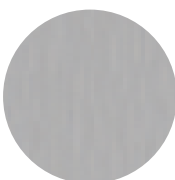
CC

Black



SN

Satin Nickel

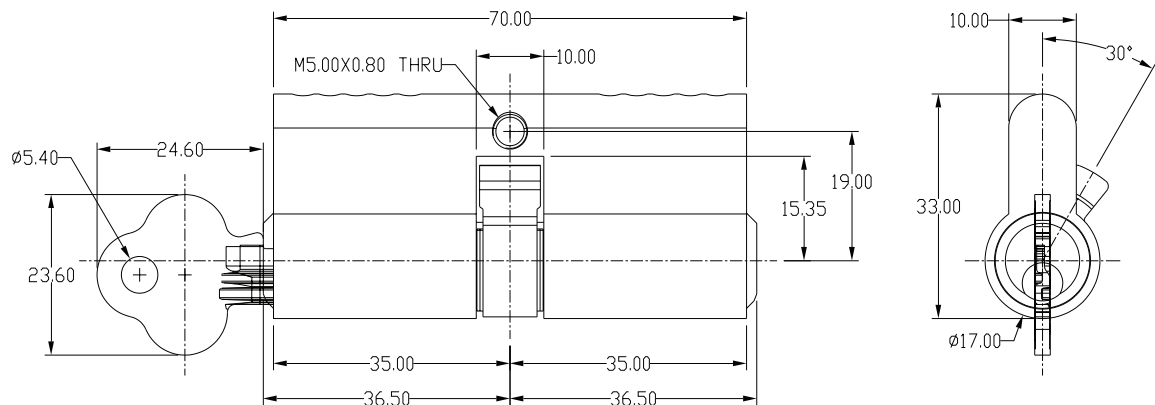


SSS

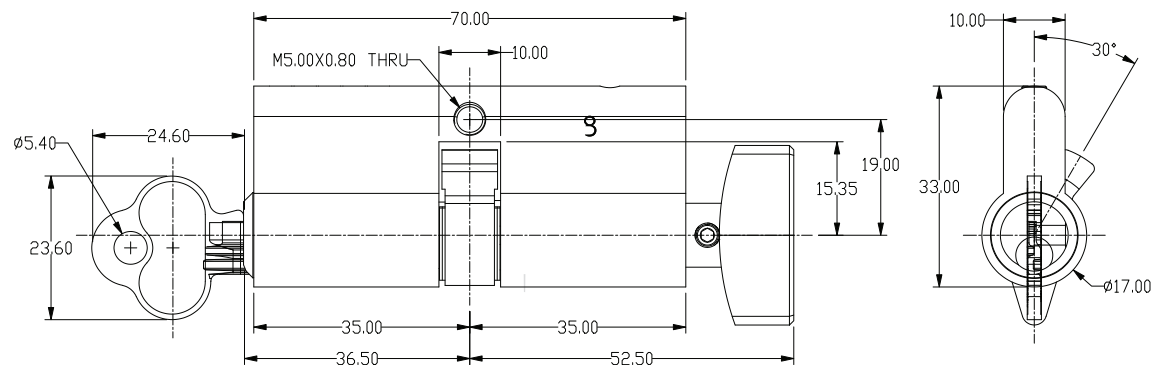
Satin Stainless
Steel

Dimension Drawings

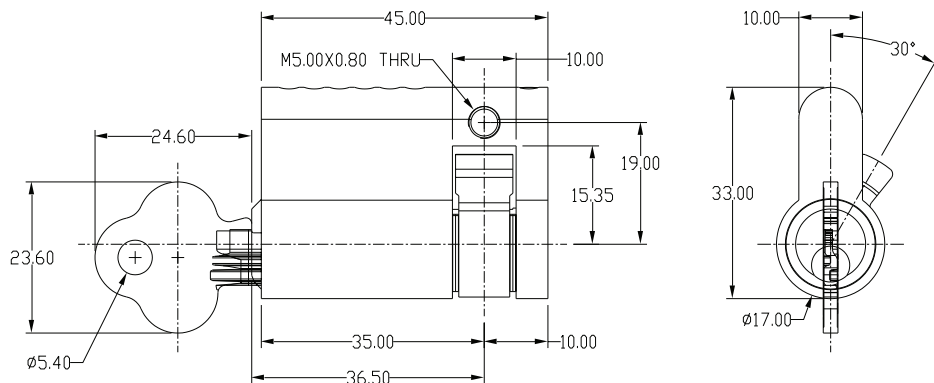
Double Cylinder



Double Cylinder with Thumb Turn on One Side



Single Cylinder



Single Cylinder with Thumb Turn

