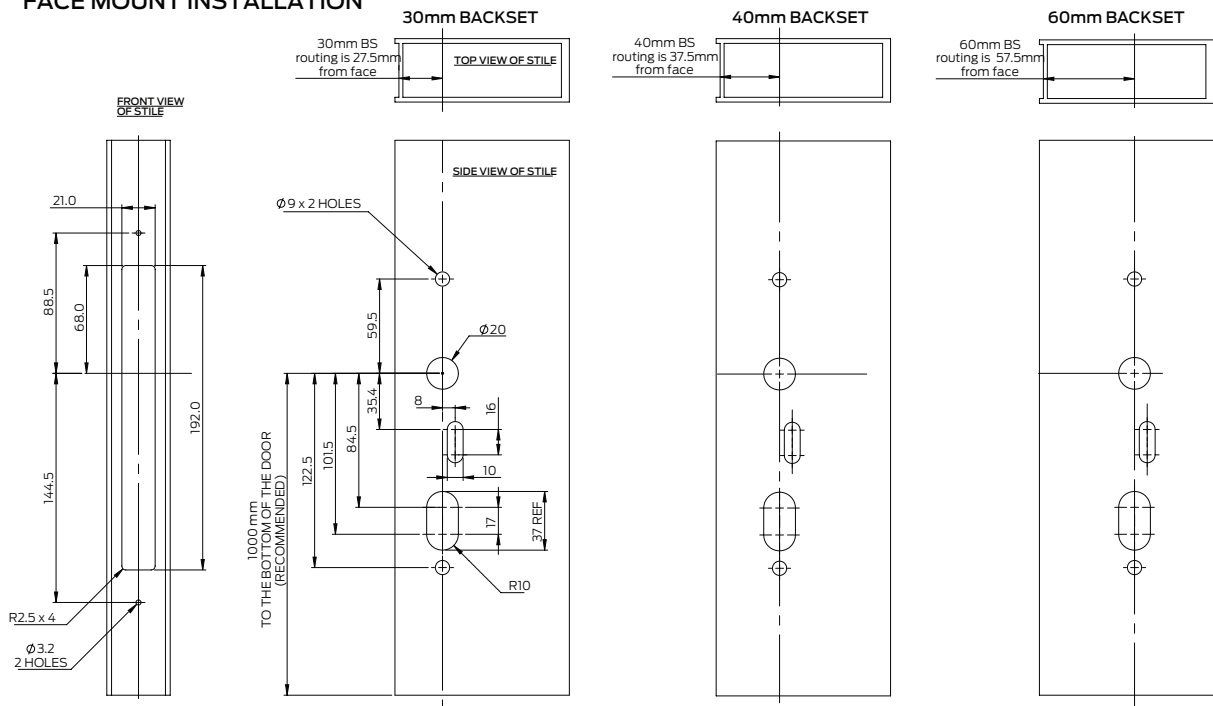


Step 1: Door Preparation (cont.)

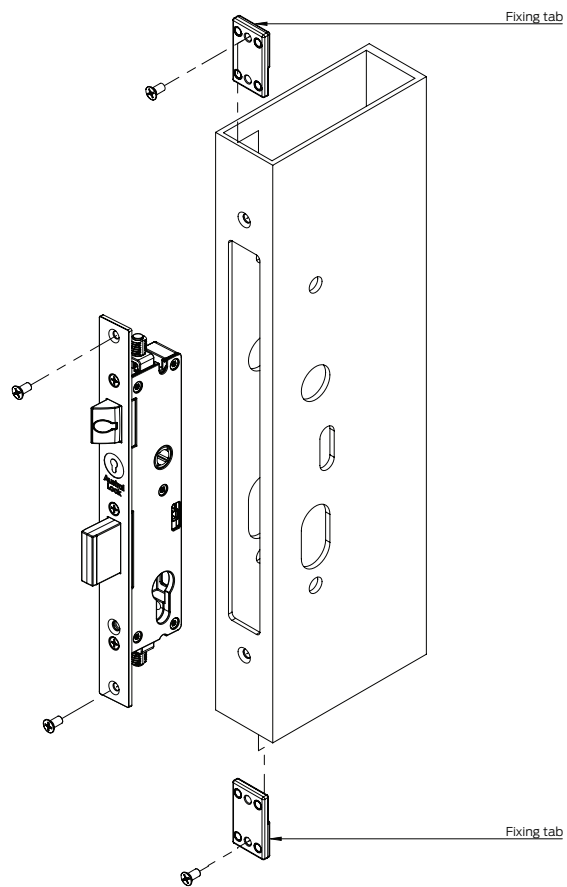
1.2 For Face Mount, route the door as per technical dimensions below

FACE MOUNT INSTALLATION



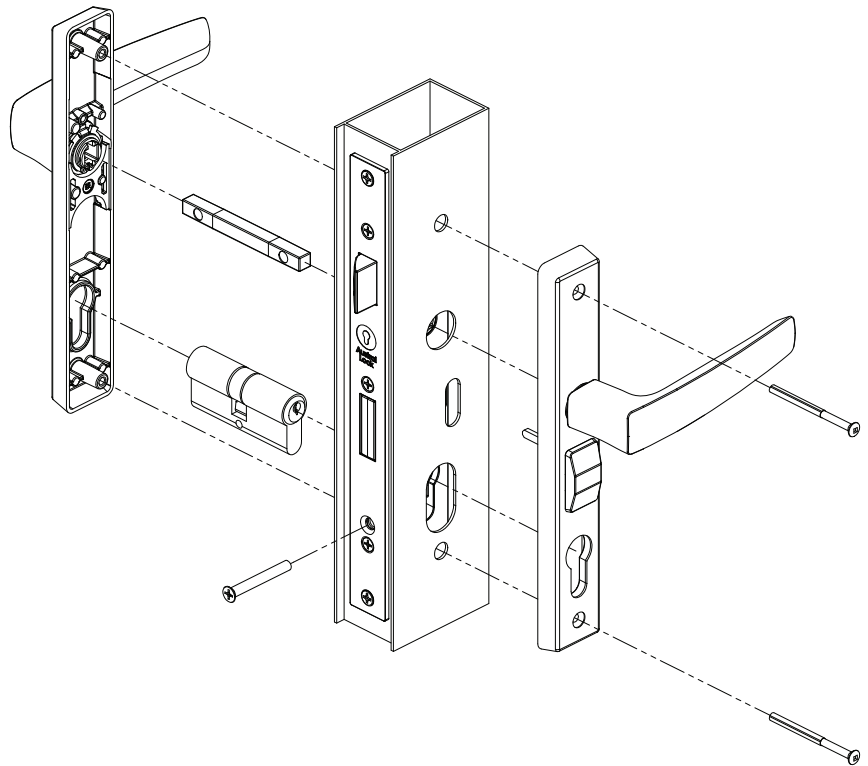
Step 2: Installing the Lock

- 2.1 Insert lock into the stile
- 2.2 Secure with screws (max length 12mm)
Use fixing tabs for flush mount installation



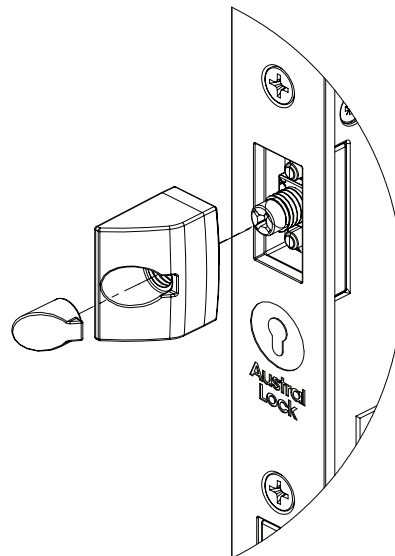
Step 3: Mounting Accessories

- 3.1 Insert the spindle into the square hub of the lock
- 3.2 Insert the cylinder into the cylinder hole and secure with the cylinder retaining screw
- 3.3 Mount the internal and external hardware onto the spindle and cylinder
- 3.4 If using snib furniture, align snib arm to snib slot in lock body
- 3.5 Secure furniture with supplied fixing screws



Step 4: Re-handing & Latch Adjustment

- 4.1 Check latch to determine if handing is correct
- 4.2 To re-hand the latch, remove cap, turn the latch, head screw counter-clockwise with a manual screw driver until the back of the latch comes out of the faceplate so it can be rotated
- 4.3 Rotate the latch head 180 degrees and re-tighten the screw fixing
- 4.4 To increase the latch projection turn the latch screw counter-clockwise
- 4.5 Latch projection can be increased by a maximum of 2mm from original position
- 4.6 Replace cap after adjustments are complete



Step 5: Shoot Bolt Assembly

- 5.1 Cut the shoot bolts to the required length as per instructions below:
- Measure the distances as shown
 - Use the formula below and cut the lengths (lengths include threaded end piece)

Top Rod (TR) = Panel Height (PH)
- Handle Centre (HC) -98mm

Bottom Rod (BR)
= Handle Centre (HC) -154mm

(Using this formula will result in the shoot bolts being flush with the top of the door panel)

- 5.2 Insert D-bolt into top/bottom of rods
5.3 Crimp D-bolt to retain and hold
5.4 Insert rods from the top and bottom of the stile and screw into the lock. Magnets in throw bolts will assist in locating rods
5.5 Retain D-bolts in stile to prevent rotation but allow throw

Note: If cylinder turn knob, key or lever is difficult to turn, lift or depress, inspect the alignment of strike plates.

