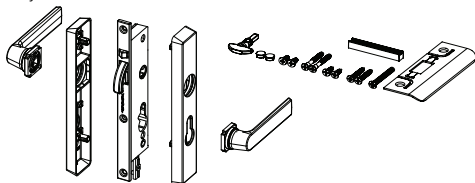


Contents

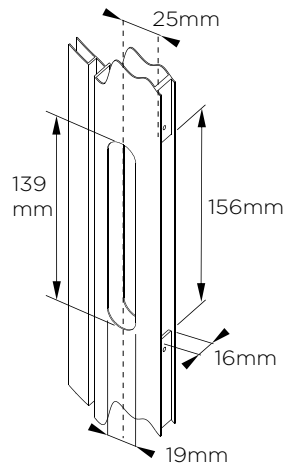
- 2x Handles
- 1x Interior escutcheon
- 1x Exterior escutcheon
- 1x Lockbody
- 2x Plastic screw caps
- 1x Fitting bag

In Fitting bag:

- 1x Snib lever
- 1x Strike plate
- 1x Spindle
- 1x #10x38mm cylinder screw
- 2x #8x13mm lockbody screws
- 2x #8x32mm furniture screws
- 2x #8x25mm strike fixing screws for timber jambs
- 2x #10x9mm strike fixing screws for metal jambs



Door preparation

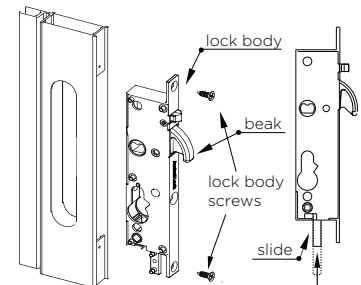


1. Lockbody preparation

IMPORTANT: If using this lock with a multipoint kit, follow the instructions supplied with the multipoint kit first.

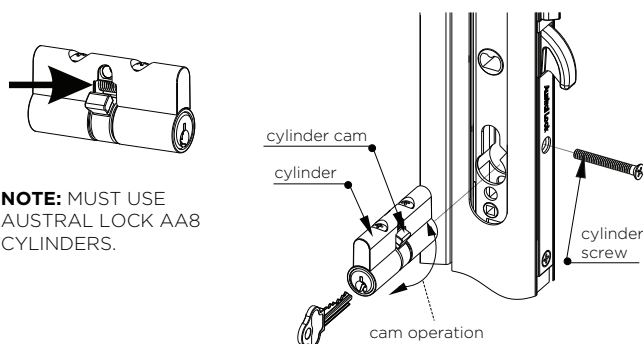
Note: The lock will be supplied locked. If the hook bolt can be pushed in, lock it by pushing the slide into the lock body.

- Insert the lock body into the door cutout.
- Secure it with the two #8x13mm screws.



2. Cylinder installation

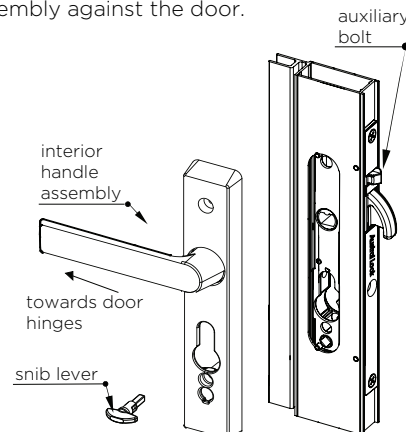
- Orientate the cylinder such that the cam is facing the edge of the door as shown in the diagram.
- Assemble the cylinder through the lock so the cylinder protrudes equally from both sides.
- Insert the key and turn to unlocked position.
- Test the hook bolt, it should retract.
- Insert #10x38mm cylinder screw to retain the cylinder in place but do not tighten.
- Remove key.



NOTE: MUST USE AUSTRAL LOCK AA8 CYLINDERS.

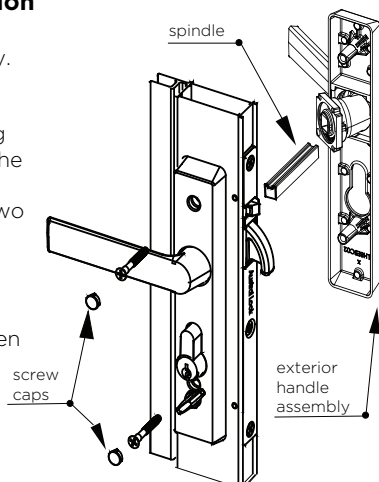
3. Furniture preparation

- Select the interior escutcheon with the snib lever hole.
- Hold the snib lever horizontally and insert it into the snib lever hole, turn it until vertical to secure it.
- Feed the handle through an escutcheon and orientate to correct handing of the door. If it does not fit insert the other handle into the escutcheon.
- While holding the snib lever vertical, place the lever assembly against the door.



4. Furniture installation

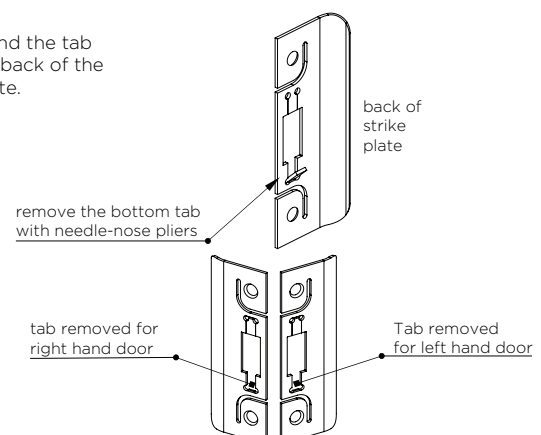
- Insert the spindle through the lock body.
- Locate the exterior handle assembly over the lockbody ensuring the spindle engages the lever.
- Partially tighten the two #8x32mm screws to retain the furniture in position.
- Tighten the cylinder screw first, then tighten the escutcheon screws.
- **Note:** If using a power tool, do not use a torque setting above 4N.m.
- Conceal the screws using the screw caps.



5. Strike plate preparation

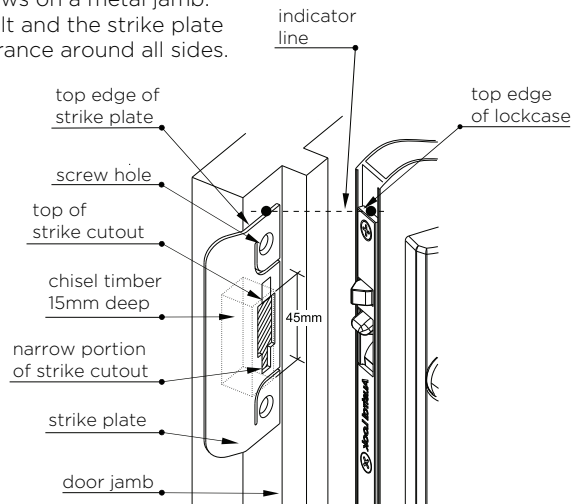
- Determine the orientation of the strike plate for a Right Hand or Left Hand door, by correctly placing the strike plate on the jamb and removing the bottom tab with pliers.

Note: Bend the tab from the back of the strike plate.



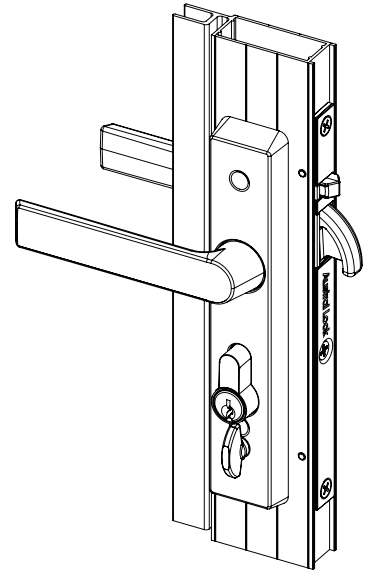
6. Strike plate installation

- Rotate the handle lever to withdraw the hook bolt.
- Pencil mark the door jamb at the same height as the top edge of the lockcase (refer to indicator line to the right).
- Align the top edge of the strike plate with the pencil mark on the door jamb.
 - Note:** The narrow portion of the cutout in the strike plate must be orientated towards the ground.
- Pencil mark through the screw holes and strike cutout.
- Pilot drill the screw holes if necessary (Ø 2.5 on timber jamb / Ø4 on metal jamb).
- Chisel out the door jamb 15mm deep from the top of the strike cutout to 45mm below this point.
- Secure the strike plate to the door jamb with:
 - Two #8x25mm timber screws on a timber jamb.
 - Two #10x9mm metal screws on a metal jamb.
- Test the fit between the hook bolt and the strike plate to ensure there is adequate clearance around all sides.



Product overview

- Use the lever to operate the bolt when it's in passage mode.
- Operate the snib to put the lock in privacy mode.
- Use the key to deadlock the lock.



Care & Maintenance

Installation

The product must be installed according to the instructions included in the product packaging and the door should be apertured according to the door "cut-out" dimensions and tolerances shown.

Prior to fitting ensure that:

Doors stored on site are stored in a clean dry area free from cement, lime, paint, acid etc.

During fitting of the lock ensure that:

- No metal swarf or other contaminants enter the lock body.
- The fixing screws do not damage the product finish.
- *Ensure that screws are not overtightened. Especially when using power tools*

After installation of the door ensure that:

- The door is correctly adjusted with the correct clearances.
- The lock engages the strike/catch plate correctly.
- The door is protected from building fall-out such as wet plaster, mortar, paint and welding splatter.

If the door becomes contaminated:

- Do not paint the lock body or faceplate.
- Remove wet plaster, cement, mortar and other droppings immediately, using ample clean water and a sponge or rag, to avoid permanent staining or scratching of the product finish.
- If removal is delayed and scraping becomes necessary the surface finish may suffer.

Maintenance

- Annually inspect the door to confirm that the door operates with the correct clearances, closes and opens without obstruction and confirm that the lock beak slides easily into the strike plate aperture when the door is closed - adjust the door if necessary.
- Annually check that when the door is closed, the lock can be locked by key and by the snib lever.
- Quarterly wipe the strike plates with a soapy rag to remove built up debris and to lubricate the strike plate.

Note: The lock assembly has been lubricated for life, and should not be disassembled by the user.

Cleaning Powder Coatings

Every six months, powder coated surfaces should be cleaned to protect the finish. However, in areas where pollutants are more prevalent, especially in coastal or industrial regions, cleaning should be carried out every two to three months. To clean the powder coated surface:

- Carefully remove any loose deposits with a wet sponge.
- Use a soft brush (non-abrasive) or cloth and a mild household detergent solution to remove dust, salt and other deposits. Do not use steel wool, scrapers, scouring liquids or powders to remove deposits as these permanently scratch the coating surface.
- Rinse off with clean fresh water.

PDAU0019



ALLEGION™

1800 098 094
info.au@allegion.com
ausloc.com