

Verta Euro Profile Cylinders



Verta euro profile cylinders are suitable to use for a wide range of applications. They are made of solid brass and have been thoroughly tested to establish quality and durability. These incorporate a clutch mechanism to enable use of key to unlock from outside while key is still left in the keyway on the inside and vice versa. They are designed and tested to Australian and New Zealand standards.

Available in multiple configurations - double cylinders, cylinder with thumb turn on one side, single cylinders and single cylinder with thumb turn. Available in C4 keyway as well as in Gainsborough GR9 keyway and in PVD Black and Satin Chrome finishes. These cylinders can be keyed to other codes to be able to use as part of a One Key system

Features

- Industry standard Euro profile
- Fixed cam with clutch mechanism
- Solid brass construction
- Pin holes secured with grub screws for easy repinning
- Comes with construction ball hole, for project keying
- Tested for 80,000 cycles
- PVD black tested for 300 hours NSS
- Available in C4 and GR9 key ways
- Available in PVD black and satin chrome finishes

Warranties

Mechanical	10 years
Finish	7 years

Specifications

Profile	Industry standard Euro profile
Material	Solid brass construction
Finishes	PVD Black or Satin Chrome
Cam	Fixed cam with clutch mechanism
Pinning	5 pins, pins capped with grub screws for easy repinning in field
Keyway	C4 or GR9
Length	70mm total length for double cylinders 45mm total length for single cylinders
Furniture	Compatible with Austral Lock Verta series, Forge series, Aurora series and Brio 288 series furniture

Finishes



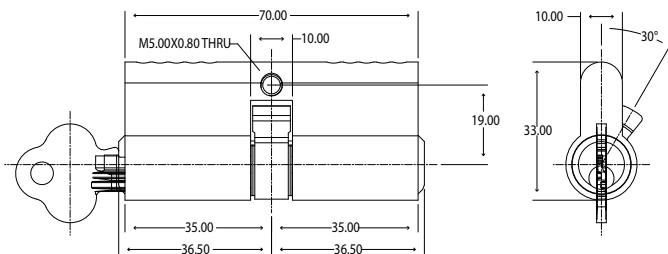
PVD Black



Satin Chrome

Diagrams

Double cylinder key dimensions



Product Codes

C4 keyway PVD black cylinders

Double cylinder KA	AAF705C4MB/KA*
Double cylinder with internal thumb turn KA	AAF705C4TTMB/KA**
Single cylinder KA	AAF455C4MB/KA

C4 keyway Satin Chrome cylinders

Double cylinder KA	AAF705C4SC/KA*
Double cylinder with internal thumb turn KA	AAF705C4TTSC/KA**
Single cylinder KA	AAF455C4SC/KA

GR9 keyway PVD black cylinder

Double cylinder KA	AAF705GMB/KA
Double cylinder with internal thumb turn KA	AAF705GTTMB/KA
Single cylinder KA	AAF455GMB/KA

GR9 keyway Satin Chrome cylinders

Double cylinder KA	AAF705GSC/KA
Double cylinder with internal thumb turn KA	AAF705GTTSC/KA
Single cylinder KA	AAF455GSC/KA

Single cylinder with thumb turn

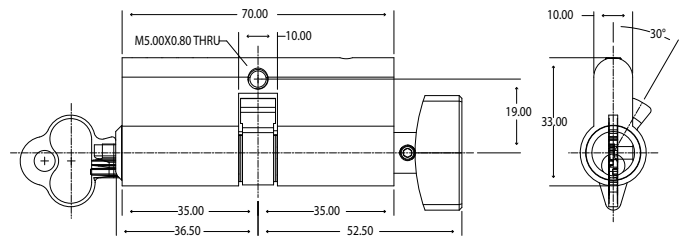
PVD black single cylinder with thumb turn	AAF45TTMB
Satin Chrome single cylinder with thumb turn	AAF45TTSC

* Key codes 801 to 810 available as stocked items, use /801 to /810 in place of /KA for ordering

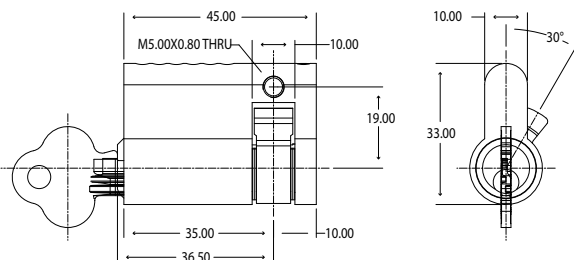
** Key codes 801 to 810 available, use 801 to 810 (NO FORWARD SLASH) in place of /KA for ordering

For custom keying, use "K " in place of "/KA" for C4 and GR9 codes

Double cylinder with internal thumb turn key dimensions



Single cylinder key dimensions



Single cylinder with thumb turn key dimensions

