

# Virtus Four Point Mortice Lock



The Austral Lock Virtus four point mortice lock is a reliable locking solution for aluminium doors. Designed and developed to Australian Standards, the Virtus four point mortice lock is a secure solution, offering a locking latch and a deadbolt which throws to 13mm and 22mm deadbolt in one lock. The shootbolts throw 17mm by lifting the lever and retract when the lever is pushed down. The nylon coated stainless steel D tips on the rods offer strong yet noiseless secure four point locking. The Virtus four point lock is compatible with standard fixed cam Euro profile cylinders and achieves S8 security rating and D8 durability rating as per AS4145: 2008.2. The Virtus lock can be used with Verta, Forge and Aurora furniture.

## Features

- Provides four points of locking: latch, deadbolt and top and bottom shootbolts
- Deadbolt can extend 13mm on one turn and 22mm on the next half turn of the key/thumb turn once or twice without adjustment to the lock
- Deadbolt returns from either 13mm or 22mm state with one turn of the key/thumb turn
- 30mm, 40mm and 60mm backset options
- Easy handing by latch rotation
- Adjustable latch projection
- Compatible with standard fixed cam Euro profile cylinders
- Employs the same door preparation as the Austral Lock Virtus two point lock
- D tips coated with nylon for quiet and smooth operation
- Standard rod kit can be used for doors up to 2.6m tall
- Extension rod available for taller doors up to 3.6m
- Fixing tabs and a narrower (22mm wide) face plate with radius corners available for easy flush mount installation
- Offers privacy locking as well as deadlocking\*

\*Privacy locking is offered when compatible sliding snib furniture is used

### Warranties

Mechanical	10 years
Finish	7 years

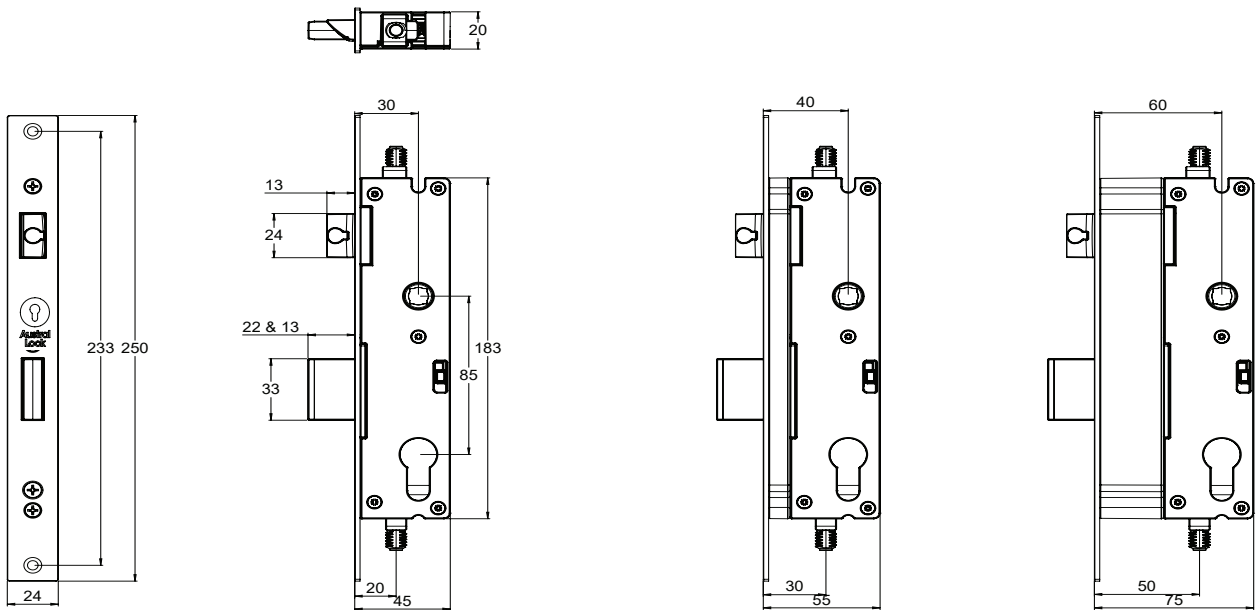
# Specifications

<b>Door type</b>	Timber or aluminium
<b>Door thickness</b>	Minimum 32mm (or 40mm when used with long plate furniture)
<b>Backset</b>	30mm, 40mm or 60mm
<b>Spindle size</b>	8mm
<b>Lock case material</b>	Zinc die-cast
<b>Faceplate</b>	Stainless steel, square corner faceplate for face mount installation; narrower and radius corner faceplate available for flushmount installation
<b>Cylinder*</b>	Suits fixed cam Euro profile cylinders, available separately
<b>Lever furniture*</b>	Can be used with long plate furniture under Austral Lock Aurora series, Verta series or Brio 288 series

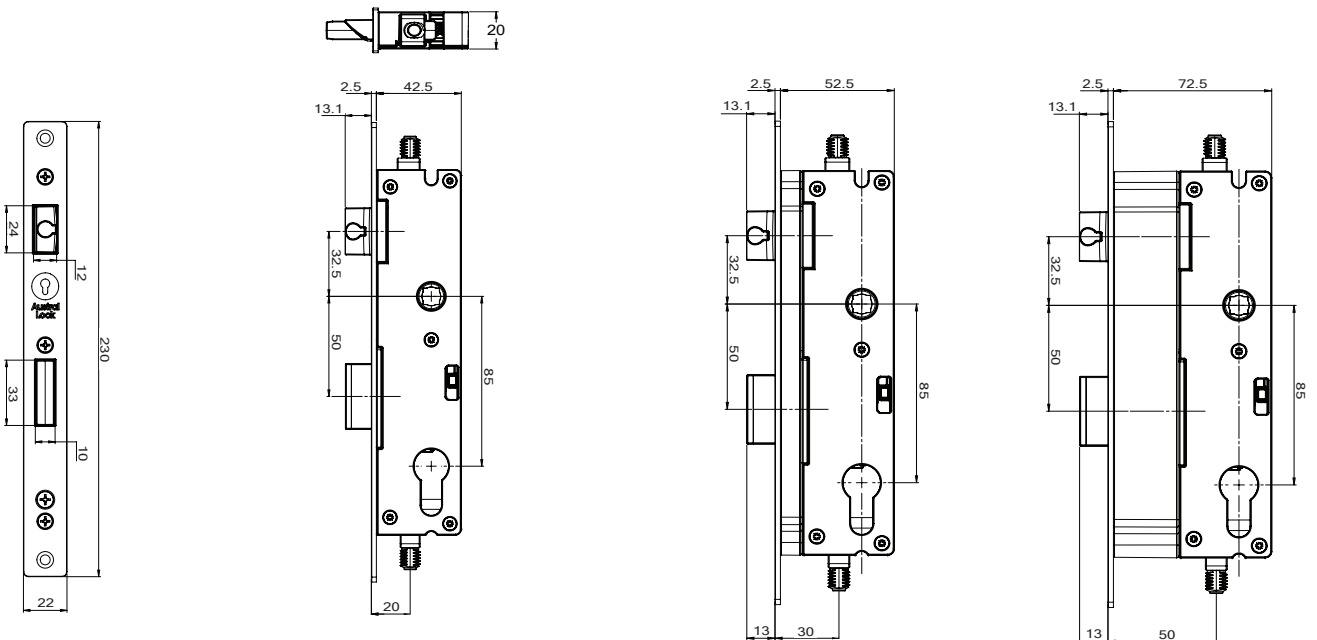
\*Refer to Allegion price guide and the Austral Lock website for compatible euro cylinder range

# Diagrams

## Facemount backsets dimensions



## Flushmount backsets dimensions



# Product Codes

## Face mount backsets, incl. fixing screws

Virtus 4 Point 30mm backset	4PT-30A
Virtus 4 Point 40mm backset	4PT-40A
Virtus 2 Point 60mm backset	4PT-60A

## Flush mount backsets, incl. fixing tabs and fixing screws

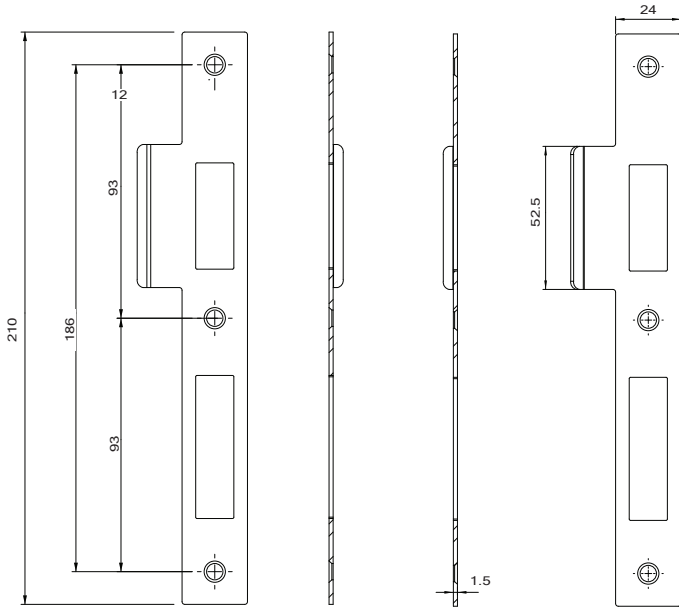
Virtus 4 Point 30mm flush mount backset	4PT-30A-FM
Virtus 4 Point 40mm flush mount backset	4PT-40A-FM
Virtus 4 Point 60mm flush mount backset	4PT-60A-FM

## Accessories

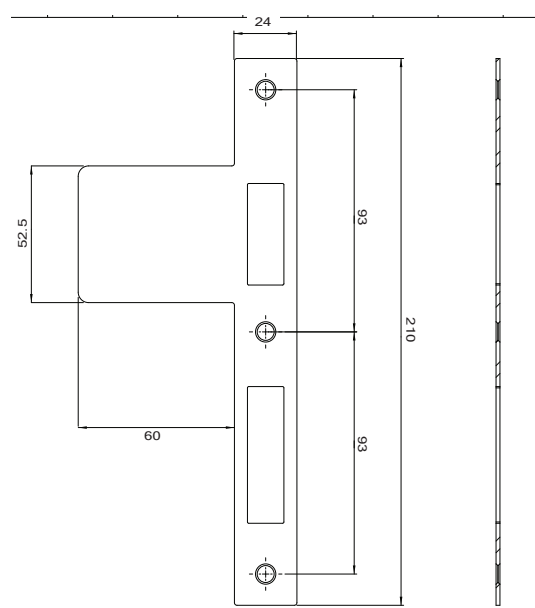
Virtus 4 Point rod kit	4PT-RK25
Virtus 4 Point rod kit 1m extension rod	4PT-RKEX
12mm left and right handed strikes pair, incl. fixing screws	2PT-12ASK
60mm long lip non-handed flat strike (no screws included)	2PT-60ASK
22mm wide fixing tabs for flush mount installation incl. fixing screws	22MMFIXTAB
16mm long D guide for rods	4PT-RK-DG

**Strike plates dimensions**

12mm left and right handed bent lip strikes

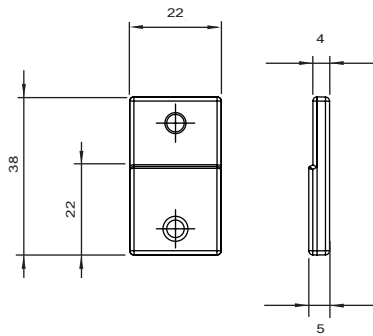


60mm long lip non-handed flat strike



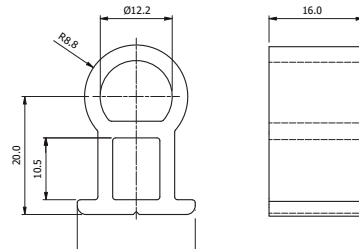
**Fixing tabs dimensions**

22mm wide stepped fixing tabs



**D tip guide dimensions**

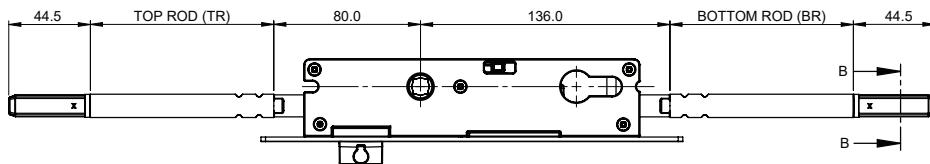
16mm long D tip guide



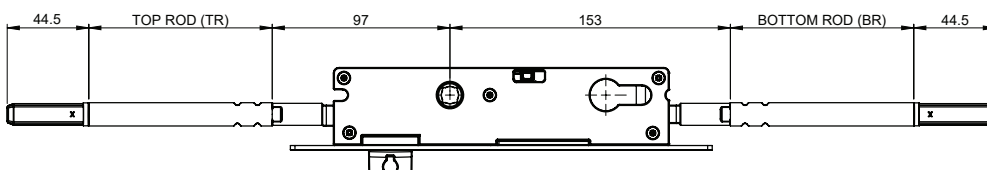
**4 Point lock with rod kits - key dimensions**

(30mm backset is shown here)

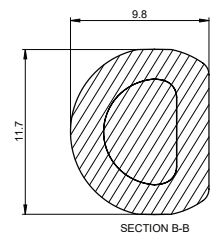
Rods in retracted position



Rods in extended position



D tip cross section dimensions

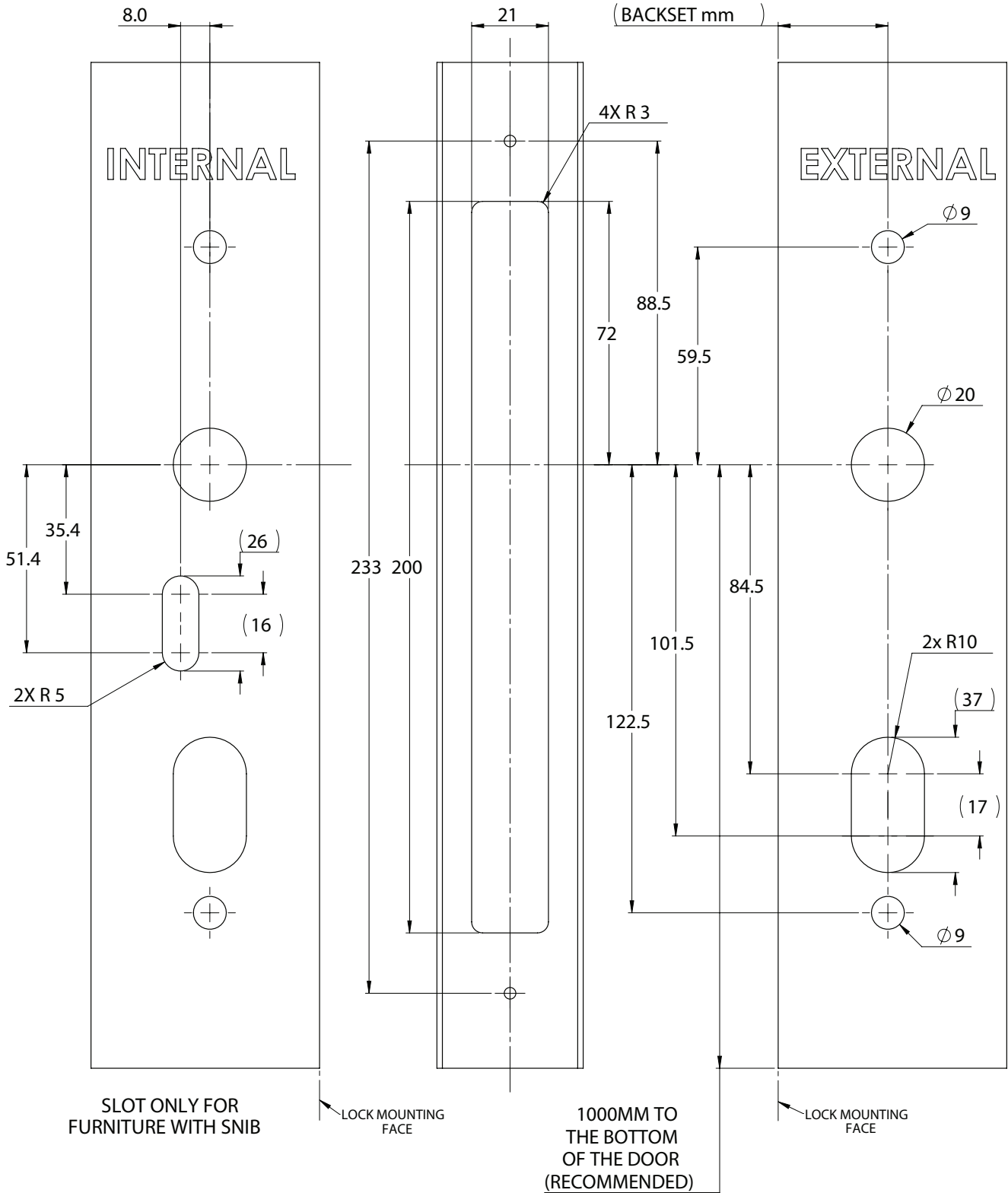


**Door cutout dimensions**

For face mount installation

30mm Backset - 27.5mm  
 40mm Backset - 37.5mm  
 60mm Backset - 57.5mm

( BACKSET mm )



# Door cutout dimensions

For flush mount installation

30mm Backset - 30mm  
 40mm Backset - 40mm  
 60mm Backset - 60mm

(BACKSET mm)

