

Verta Euro Profile Cylinders



Verta euro profile cylinders are suitable to use for a wide range of applications. They are made of solid brass and have been thoroughly tested to establish quality and durability. These incorporate a clutch mechanism to enable use of key to unlock from outside while key is still left in the keyway on the inside and vice versa. They are designed and tested to Australian and New Zealand standards.

Available in multiple configurations - double cylinders, cylinder with thumb turn on one side, single cylinders and single cylinder with thumb turn. Available in C4 keyway as well as in Gainsborough GR9 keyway and in PVD Black and Satin Chrome finishes. These cylinders can be keyed to other codes to be able to use as part of a One Key system

Features

- Industry standard Euro profile
- Fixed cam with clutch mechanism
- Solid brass construction
- Pin holes secured with grub screws for easy repinning
- Comes with construction ball hole, for project keying
- Tested for 80,000 cycles
- PVD black tested for 300 hours NSS
- Available in 70mm and 80mm lengths
- Available in C4 and GR9 key ways
- Available in PVD black and satin chrome finishes

Warranties	
Mechanical	10 years
Finish	7 years

Specifications

Profile	Industry standard Euro profile
Material	Solid brass construction
Finishes	PVD Black or Satin Chrome
Cam	Fixed cam with clutch mechanism
Pinning	5 pins, pins capped with grub screws for easy repinning in field
Keyway	C4 or GR9
Length	70mm or 80mm total length for double cylinders 45mm total length for single cylinders
Furniture	Compatible with Austral Lock Verta series, Forge series, Aurora series and Brio 288 series furniture

Finishes



PVD Black



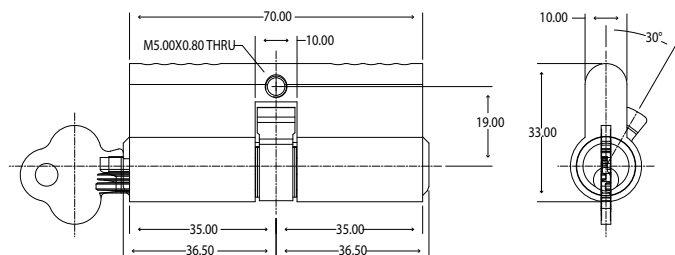
Satin Chrome

Product Codes

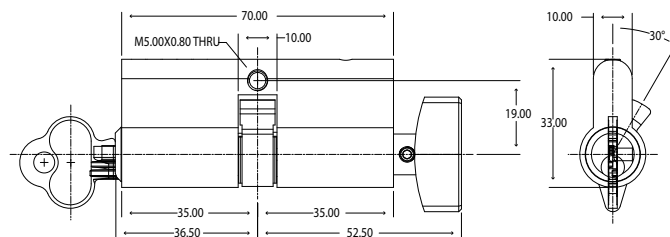
C4 keyway PVD black cylinders	
70mm Double cylinder KA	AAF705C4MB/KA*
70mm Double cylinder with internal thumb turn KA	AAF705C4TTMB/KA**
80mm Double cylinder KA	AAF805C4MB/KA
80mm Double cylinder with internal thumb turn KA	AAF805C4TTMB/KA
Single cylinder KA	AAF455C4MB/KA
C4 keyway Satin Chrome cylinders	
70mm Double cylinder KA	AAF705C4SC/KA*
70mm Double cylinder with internal thumb turn KA	AAF705C4TTSC/KA**
80mm Double cylinder KA	AAF805C4SC/KA
80mm Double cylinder with internal thumb turn KA	AAF805C4TTSC/KA
Single cylinder KA	AAF455C4SC/KA
GR9 keyway PVD black cylinder	
70mm Double cylinder KA	AAF705GMB/KA
70mm Double cylinder with internal thumb turn KA	AAF705GTTMB/KA
80mm Double cylinder KA	AAF805GMB/KA
80mm Double cylinder with internal thumb turn KA	AAF805GTTMB/KA
Single cylinder KA	AAF455GMB/KA
GR9 keyway Satin Chrome cylinders	
70mm Double cylinder KA	AAF705GSC/KA
70mm Double cylinder with internal thumb turn KA	AAF705GTTSC/KA
80mm Double cylinder KA	AAF805GSC/KA
80mm Double cylinder with internal thumb turn KA	AAF805GTTSC/KA
Single cylinder KA	AAF455GSC/KA
Single cylinder with thumb turn	
PVD black single cylinder with thumb turn	AAF45TTMB
Satin Chrome single cylinder with thumb turn	AAF45TTSC
* Key codes 801 to 810 available as stocked items, use /801 to /810 in place of / KA for ordering	
** Key codes 801 to 810 available, use 801 to 810 (NO FORWARD SLASH) in place of /KA for ordering	
For custom keying, use "K "in place of "/KA" for C4 and GR9 codes	

Diagrams

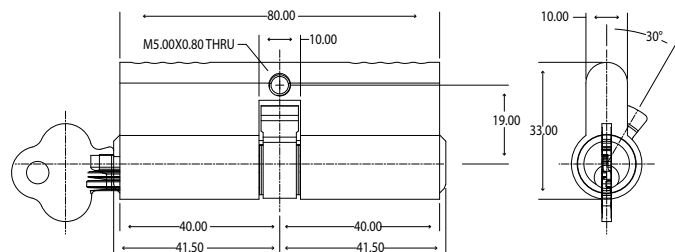
70mm Double cylinder key dimensions



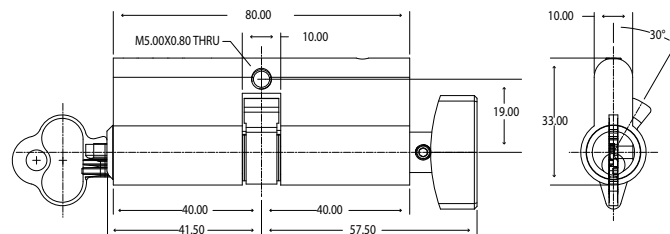
70mm Double cylinder with internal thumb turn key dimensions



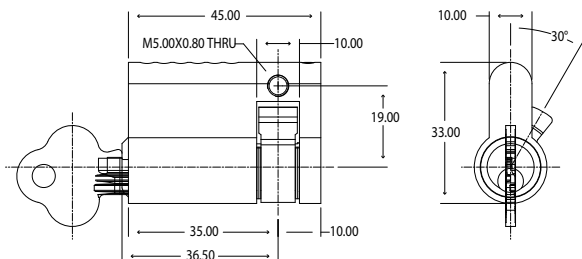
80mm Double cylinder key dimensions



80mm Double cylinder with internal thumb turn key dimensions



Single cylinder key dimensions



Single cylinder with thumb turn key dimensions

