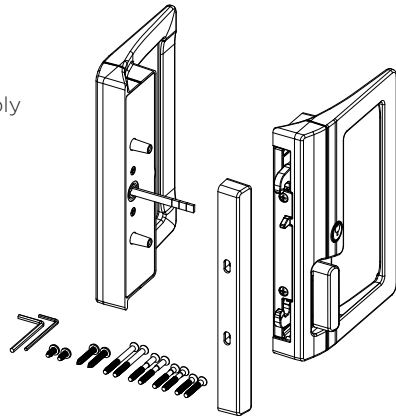


### Contents:

- 1x Exterior handle assembly
- 1x Interior handle assembly
- 1x Catch cover strike assembly

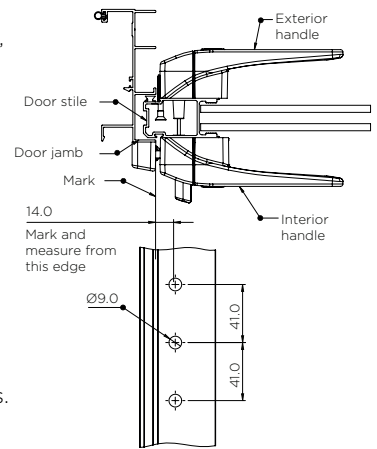
### In fitting bag:

- 2x G8X1.0" CSK Screws
- 2x G8X1.25" CSK Screws
- 2x G8X1.5" CSK Screws
- 2x G8X1.75" CSK Screws
- 2x 25mm Face fix screws
- 2x 9.5mm Front fix screws
- 1x 2mm Hex key
- 1x 3mm Hex key



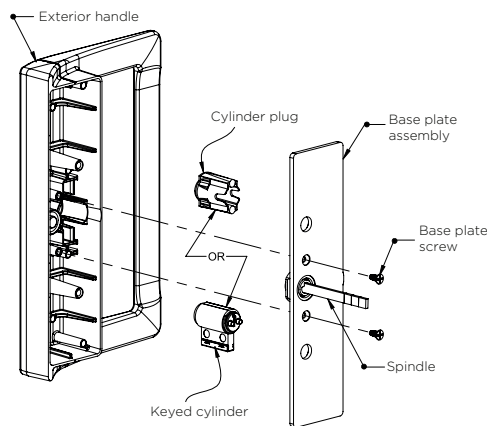
### 1. Door preparation

- For optimal installation, ensure the door is rolling smoothly and closing parallel into the jamb by lubricating and adjusting the rollers. Close the door and lightly mark the door stile at the edge of the overlapping jamb.
- Prepare three 9mm holes in the door stile. Ensure the holes are straight free from burrs.



### 2. Exterior handle installation

- Remove the retaining plate from the back of the exterior handle. If a keyed cylinder to be used, remove the cylinder plug and discard.
- Use the table to determine the required spindle length.  
**NOTE:** If using packer(s), add the total packing thickness to the door thickness, then use that value for reference in the table.
- Use pliers or a vice to carefully break off the required number of pre-notched portions of the spindle to suit the door thickness.

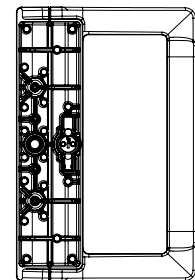
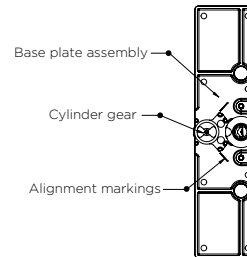
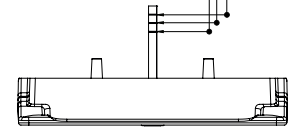
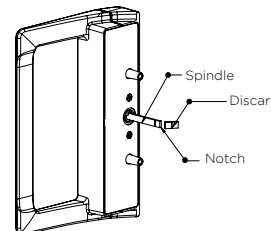


#### Total thickness (Door thickness + Packing thickness)

- 46.4 to 40.2mm
- 40.1 to 33.9mm
- 33.8 to 27.6mm
- 27.5 to 21.3mm

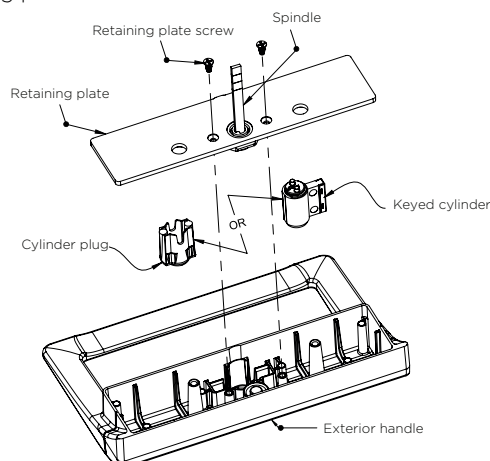
#### Spindle preparation

- Not required
- Break off '1' portion
- Break off '2' portions
- Break off '3' portions



### 3. Exterior handle installation CONT.

- Insert the cylinder plug or the keyed cylinder into the exterior handle.
- Insert the spindle through the hole in the retaining plate, and re-assemble the retaining plate into the exterior handle. It may be necessary to rotate the spindle to find its position between the drive pins on the cylinder.
- Push the retaining plate in firmly and fasten back the retaining plate screws.



### 4. Fixing screw selection

- Four pairs of fixing screws are provided to suit different door thicknesses. Use the table below to identify which are the correct length fixing screws.

**Note:** if using packer(s), add the total packing thickness to the door thickness, then use this value in the table below.

#### Door thickness

#### Screw selection

- 46.4 to 40.2mm → 1 3/4" Fixing screw
- 40.1 to 33.9mm → 1 1/2" Fixing screw
- 33.8 to 27.6mm → 1 1/4" Fixing screw
- 27.5 to 21.3mm → 1" Fixing screw

## 5. Lock installation

- If the beaks of the interior assembly are extended, use the lever to retract them.
- Remove the handle screws and lift the interior handle off the interior base, place them aside.
- Place the exterior assembly onto the exterior face of the door stile. Rotate the protruding spindle into a vertical position.
- Place the interior base onto the interior face of the door stile, (if using a spacer, place it between the door face and interior base).
- Allow the protruding spindle to enter the receiving slot on the underside of the interior base.
- Locate the bosses on the underside of the interior base into the holes in the door stile.
- Pass the correct length fixing screws through the interior base and screw firmly into the exterior assembly.

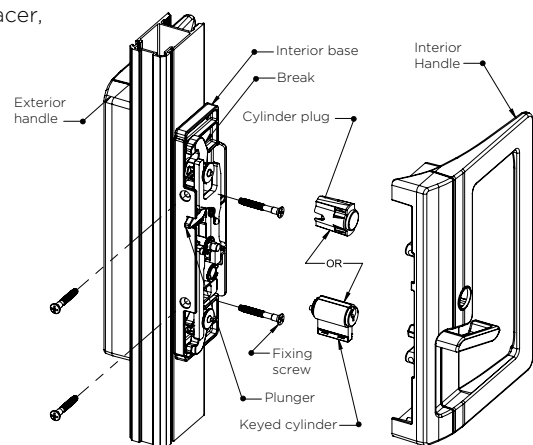
**Note: do not over tighten fixing screws.**

## 6. Internal cylinder installation (optional)

- To install a keyed cylinder into the interior assembly, remove and discard the cylinder plug from the underside of the interior handle.
- Install the keyed cylinder into the interior handle.

## 7. Fixing interior handle

- Place the interior handle over the interior base. It may be necessary to rotate the lever to find its correct orientation. Refit the two handle screws.

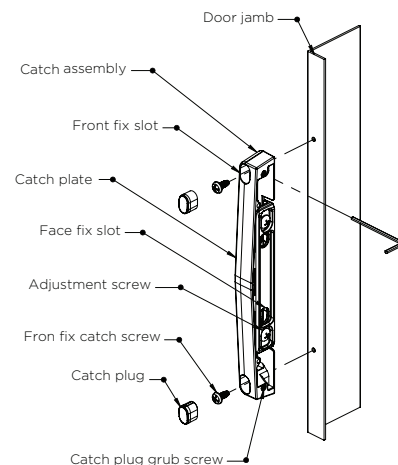


## 8. Catch plate installation

- To fix the catch assembly to the front of the jamb, reverse the adjustment screws from their fully 'screwed-in' position three (3) full turns with the 3.0mm hex key. Reverse the catch plug grub screws with the 2.0mm hex key and remove the catch plugs using a small screwdriver.
- Close the door and position the catch assembly on the jamb opposite the lock with a 1 to 2mm gap between the lock and catch assembly. Mark the centre of the 'front fix' slots and drill the jamb with a 3.5mm drill.
- Use the two 'front fix' catch screws provided to fit the catch assembly lightly to the jamb. Gently close the door and operate the lever to test the beak engagement. Move the catch assembly up and down and adjust the catch plate in and out to achieve the best fit.

**Note:** if required use packers provided to align catch plate assembly with interior handle assembly.

- Tighten the 'front fix' catch screws, refit the catch plugs and tighten the catch plug grub screws. Be careful not to over tighten these screws.
- To fix the catch assembly to the face of the reveal, leave the catch plugs in place, mark through the 'face fix' slots, and use the 'face fix' catch screws instead.



## Care & Maintenance

### Installation

The product must be installed according to the instructions included in the product packaging and the door should be apertured according to the door "cut-out" dimensions and tolerances shown.

Prior to fitting ensure that:

Doors stored on site are stored in a clean dry area free from cement, lime, paint, acid etc.

During fitting of the lock ensure that:

- No metal swarf or other contaminants enter the lock body.
- The fixing screws do not damage the product finish.
- *Ensure that screws are not overtightened. Especially when using power tools.*

After installation of the door ensure that:

- The door is correctly adjusted with the correct clearances.
- The lock engages the strike plate correctly.
- The door is protected from building fall-out such as wet plaster, mortar, paint and welding splatter.

If the door becomes contaminated:

- Do not paint the lock body or faceplate.
- Remove wet plaster, cement, mortar and other droppings immediately, using ample clean water and a sponge or rag, to avoid permanent staining or scratching of the product finish.
- If removal is delayed and scraping becomes necessary the surface finish may suffer.

### Maintenance

- Annually inspect the door to confirm that the door operates with the correct clearances, closes and opens without obstruction and confirm that the lock beaks rotate easily into the catchplate when the door is closed - adjust the door if necessary.
- Annually check that when the door is closed, the lock can be locked by key and by the snib lever.
- Quarterly wipe the catchplates with a soapy rag to remove built up debris and to lubricate the strike plate.

**Note:** the lock assembly has been lubricated for life, and should not be disassembled by the user.

### Cleaning powder coatings

Every six months, powder coated surfaces should be cleaned to protect the finish. However, in areas where pollutants are more prevalent, especially in coastal or industrial regions, cleaning should be carried out every two to three months. To clean the powder coated surface:

- Carefully remove any loose deposits with a wet sponge.
- Use a soft brush (non abrasive) or cloth and a mild household detergent solution to remove dust, salt and other deposits. Do not use steel wool, scrapers, scouring liquids or powders to remove deposits as these permanently scratch the coating surface.
- Rinse off with clean fresh water.